



THE REDNOTE CLUSTERS

The Steep Ladder & The Strategy of "Server
Hopping"

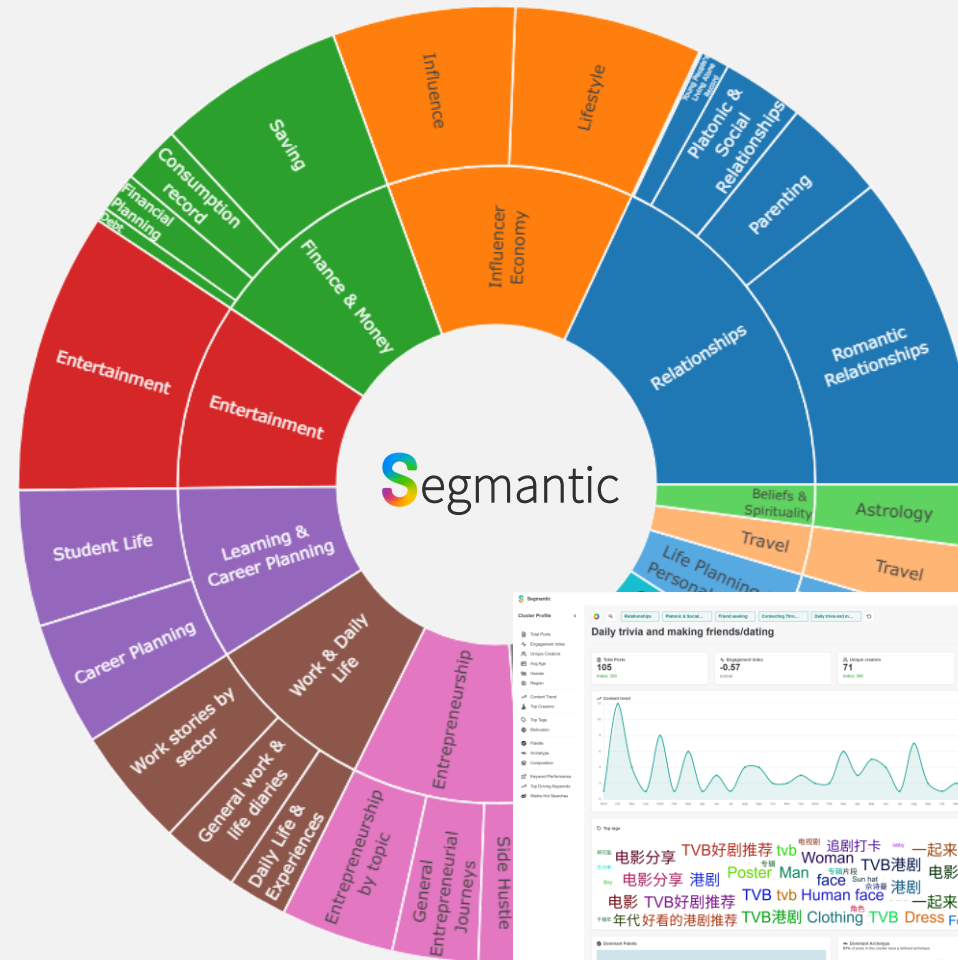
December 2025

DECODING THE OPERATING SYSTEM OF CHINESE YOUTH CULTURE

RedNote is the field site.
Segmantic is the digital ethnographer.

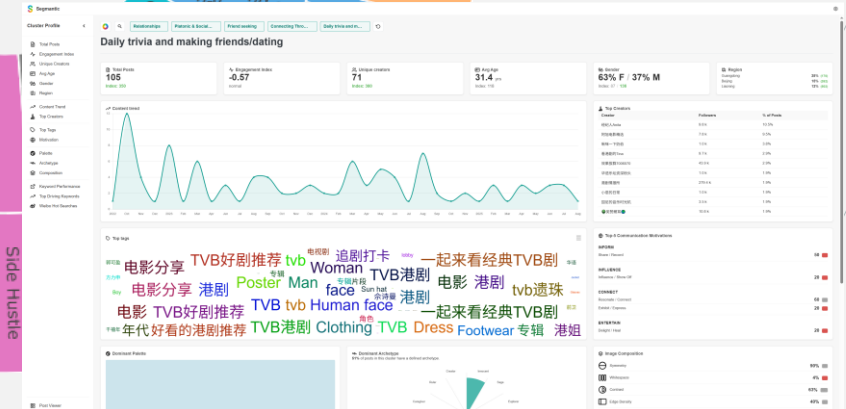
Traditional social analysis chases "heat"—isolated spikes in engagement without context.
Segmantic defines the universe first.

Using our proprietary **Taxonometrics** engine, we organize the chaos of social noise into a rigorous cultural architecture. We separate transient noise from structural shifts, mapping the haystack to show exactly where a trend sits within the broader logic of Gen-Z life.






The China Gen-Z Taxonomy

- 2 Years data
- 180,000 qualified posts
- 2,230 social topics
- 156 nano themes
- 69 micro themes
- 30 meso themes
- 13 macro themes



THE STEEP LADDER & THE STRATEGY OF "SERVER HOPPING"

	 Change over Stability	 Metaphysical Insurance	 Avatar Optimization
Stimulus	<p>The 'Standard Route' is no longer just competitive; it is a statistical improbability. When there are 16,000 applicants for a single position, patience is no longer a virtue—it's a trap.</p>	<p>When you have the degree, the skills, and the effort, but the algorithm still rejects you, logic stops working. To handle the randomness of a broken system, you need 'celestial back-up'.</p>	<p>In a gig economy where you are the product, and thousands are competing for the same spot, your 'skin' (appearance) feels like one of the few variables you can control</p>
Response	<p>Change over Stability is the refusal to play a game you are mathematically unlikely to win. Instead of 'waiting it out' for a stable job that may never come, they choose 'Server Hopping'—'Naked Resignations' or moving cities to force a reset. It is a belief that movement is safety; if you can't climb <i>up</i> the ladder, you must move <i>out</i> to a new map."</p>	<p>"Metaphysical Insurance is the strategy of buffering high-risk moves with spiritual rituals. Visiting temples or checking zodiacs isn't passive superstition; it is an active anxiety management tool. It provides the psychological 'permission' to take a leap of faith (like moving cities) when the data says 'no'.</p>	<p>Avatar Optimization is treating your image as 'Visual Capital.' Following K-Pop visuals or considering surgery isn't just vanity, it's a strategic investment. When professional feedback is vague ('you're not good enough'), upgrading the 'Avatar' is a tangible way to improve your win rate in a crowded server.</p>

CHOOSING CHANGE OVER STABILITY, REFUSING TO PLAY GAMES YOU ARE MATHEMATICALLY UNLIKELY TO WIN

- Naked Resignation is a proactive choice to reclaim agency when life isn't what you expected

Life and Exploration After Quitting



Buzz Potential: Low (-8.21)
 Motivation: Share (80)
 Archetype: Everyman (67%)
 Age: 25.0 (i94)
 Gender: 100% Female (i137)

- Rebooting life shows that the fear of stagnation now outweighs the fear of instability

Restarting in Stages, Future Wish



Buzz Potential: Extremely High (+19.03)
 Motivation: Express (80)
 Archetype: Ruler (75%)
 Age: 27.7 (i90)
 Gender: 58% Male (i213)

- Going abroad isn't just for education; it's a literal server hop to evade "involution"

Life & Studying in the UK



Buzz Potential: Normal (-3.89)
 Motivation: Share (90)
 Archetype: Innocent (46%)
 Age: 21.4
 Gender: 91% Female (i125)

BUFFERING HIGH-RISK MOVES WITH SPIRITUAL RITUALS AS A WAY TO ACQUIRE METAPHYSICAL INSURANCE

- Users manifest luck by sharing affirmations to offset the anxiety of real and anticipated rejection
- Zodiac Forecasts take the pace of Market Intelligence, when contemplating major life change
- Unemployment Lottery or Fortune Analysis become ways to test your luck and find a win

Life After Civil Service Exam



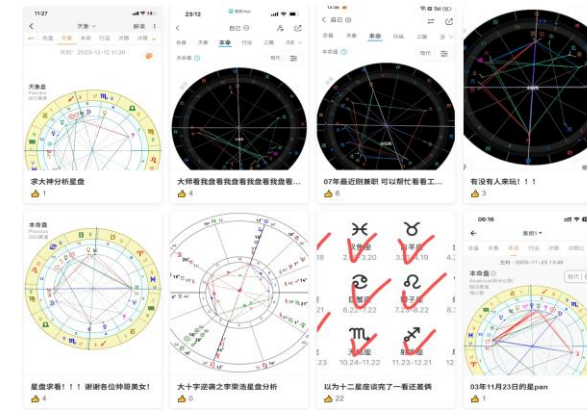
Buzz Potential: High (+33.4)
Motivation: Inspire (80)
Archetype: Jester (93%)
Age: 25.4 (i96)
Gender: 90% Female (i124)

Snake Year Fortune: '77, '89, '01



Buzz Potential: Low (-10.01)
Motivation: Express (80)
Archetype: Jester (65%)
Age: 41.7 (i157)
Gender: 91% Male (i336)

Birth Chart Fortune Analysis



Buzz Potential: Normal (-1.69)
Motivation: Share (80)
Archetype: Creator (100%)
Age: 24.4
Gender: 92% Female (i126)

OPTIMIZING YOUR AVATAR BECOMES AN OUTWARDLY VISIBLE INVESTMENT IN YOUR MARKETABILITY

- Double Eyelid modification becomes viewed as a standard, shareable "upgrade"



Buzz Potential: Normal (-1.53)
Motivation: Inspire (80)
Archetype: Everyman (64%)
Age: 22.1 (i83)
Gender: 78% Female (i107)

- Photo-rejuvenation and skin management become a market necessity not a luxury



Buzz Potential: High (+0.40)
Motivation: Inspire (90)
Archetype: Everyman (18%)
Age: 27.0 (i90)
Gender: 48% Female (i66)

- 爆改 "Bao Gai" radical makeovers are a way to stand out and step forward in the game



Buzz Potential: Normal (-4.92)
Motivation: Connect (90)
Archetype: Everyman (67%)
Age: 28.0 (105)
Gender: 100% Female (i137)

HOW BRANDS ARE DIRECTLY OR INDIRECTLY TAPPING INTO SERVER HOPPING



THE WHAT

In 2024 retailer **Pang Dong Lai** introduced "**Unhappy Leave**" (**不开心假**). Employees can take up to 10 days off annually *without approval* simply because they don't feel happy.

THE WHY

It **acknowledges that life can be glitchy** and draining. Instead of forcing players to grind harder, the brand officially sanctions "logging out" to work on wellbeing.



THE WHAT

This 2024 **hit TV series "To the Wonder"** depicts a young woman who "fails to make it" in the big city and retreats to the remote Altay wilderness. It sparked mass tourism to Altay in Xinjiang.

THE WHY

The '**Altay Effect**' demonstrates that walking away from the city is a form of self-rescue. It offers a psychological permission to hit pause, reconnect with nature, and **build a life around healing** rather than hustle.